

LINE-HIDE™

Lineset Cover System

PROTECT & BEAUTIFY

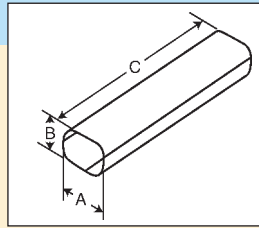


**A complete system for
completing the job**

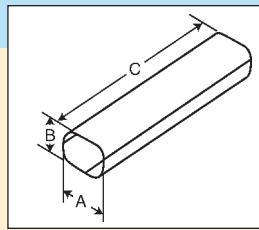


LINE-HIDE Lineset Cover System

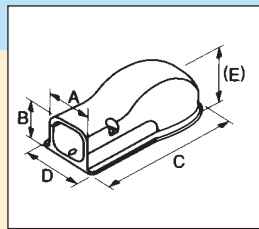
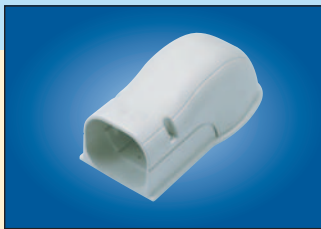
PRODUCT INFORMATION & SPECIFICATIONS



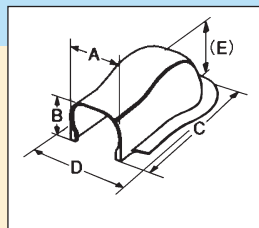
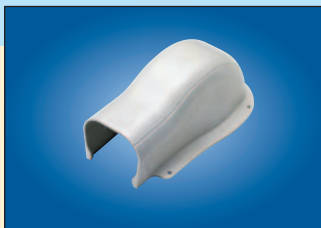
Product	Dimensions (in inches)					Weight (ounces)
	A	B	C	D	E	
Split Line Tube (PVC)						
CD-60	2-1/4	2-5/16	78-3/4			38.8
CD-75	2-15/16	2-7/16	78-3/4			44.1
CD-100	3-7/8	2-11/16	78-3/4			64.2
CD-140	5-7/16	3-1/16	78-3/4			73.4



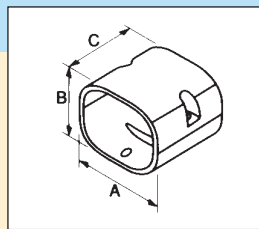
Product	Dimensions (in inches)					Weight (ounces)
	A	B	C	D	E	
Split Line Tube (ASA)						
DD-60	2-1/4	2-5/16	78-3/4			38.8
DD-75	2-15/16	2-7/16	78-3/4			44.1
DD-100	3-7/8	2-11/16	78-3/4			64.2
DD-140	5-7/16	3-1/16	78-3/4			73.4



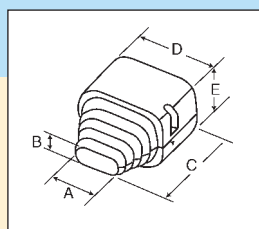
Product	Dimensions (in inches)					Weight (ounces)
	A	B	C	D	E	
Wall Cover/Inlet						
NW-60	2-9/16	2-9/16	7-7/8	3-1/16	3-3/16	6.3
NW-75	3-1/4	2-11/16	8-1/4	3-11/16	3-1/4	7.9
NW-100	4-3/16	2-15/16	9-1/8	4-11/16	3-3/4	10.6
NW-140	5-3/4	3-3/8	11-1/4	6-1/4	4-1/8	16.2



Product	Dimensions (in inches)					Weight (ounces)
	A	B	C	D	E	
Simple Wall Cover						
NY-60	2-9/16	2-9/16	7-7/8	3-1/16	3-3/16	6.3
NY-75	3-1/4	2-11/16	8-1/4	3-11/16	3-1/4	7.9
NY-100	4-3/16	2-15/16	9-1/8	4-11/16	3-3/4	10.6
NY-140	5-3/4	3-3/8	11-1/4	6-1/4	4-1/8	16.2

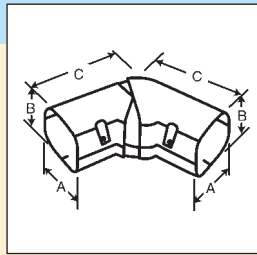
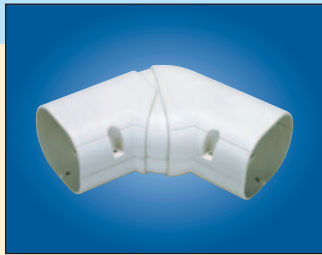


Product	Dimensions (in inches)			Weight (ounces)
	A	B	C	
Socket/Coupling joins two pieces of tubing				
NS-60	2-9/16	2-9/16	3-1/8	2.5
NS-75	3-1/4	2-11/16	3-1/8	2.8
NS-100	4-3/16	2-15/16	3-1/8	3.5
NS-140	5-3/4	3-3/8	3-1/8	4.8



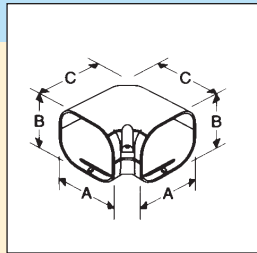
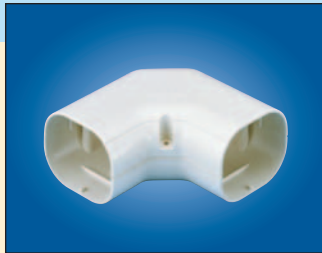
Product	Dimensions (in inches)					Weight (ounces)
	A	B	C	D	E	
End Socket (Can be cut to accommodate various lineset combinations)						
NR-60	2-1/16	1-3/16	3-7/8	2-9/16	2-9/16	2.3
NR-75	2-1/16	1-3/16	3-7/8	3-1/4	2-11/16	2.8
NR-100	2-1/16	1-3/16	4-1/2	4-3/16	2-15/16	4.1
NR-140	2-1/16	1-3/16	5-5/8	5-3/4	3-3/8	7.1

Product	Dimensions (in inches)					Weight (ounces)
	A	B	C	D	E	



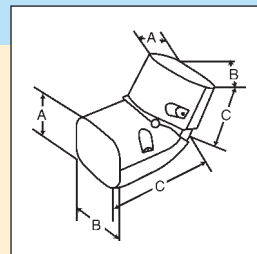
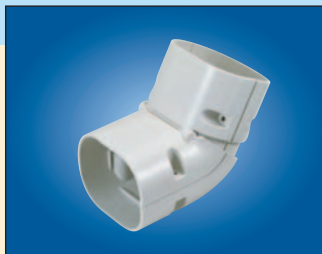
Universal Elbow (Horizontal) adjustable 45° to 90°

NX-75	3-1/4	2-11/16	6			7.6
NX-100	4-3/16	2-15/16	7-5/8			11.6
NX-140	5-3/4	3-3/8	9-3/4			17.6



90° Elbow (Horizontal)

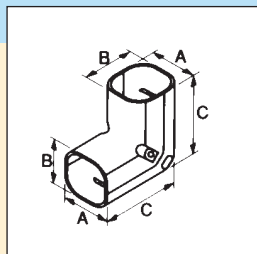
NE-60	2-9/16	2-9/16	4-11/16			4.8
NE-75	3-1/4	2-11/16	5-9/16			6.3
NE-100	4-3/16	2-15/16	6-5/16			8.5
NE-140	5-3/4	3-3/8	7-7/8			13.0



Universal Elbow (Vertical) adjustable 45° to 90°

NZ-60	2-9/16	2-9/16	4-5/8			5.3
NZ-75	3-3/8	2-11/16	4-13/16			6.0

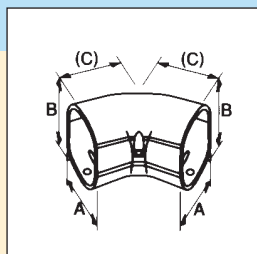
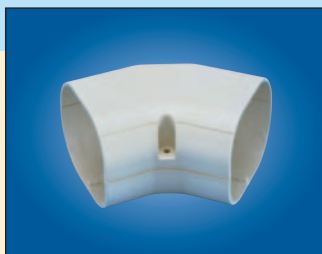
Reversible for inside or outside corner



90° Elbow (Vertical)

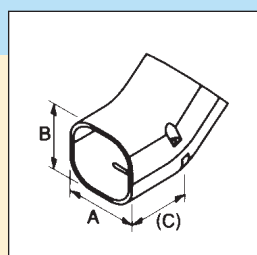
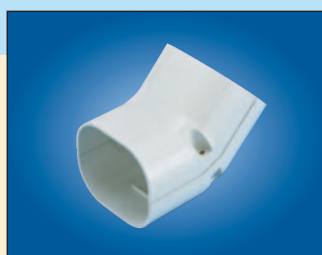
NC-60	2-9/16	2-9/16	4-3/4			5.3
NC-75	3-1/4	2-11/16	4-7/8			6.0
NC-100	4-3/16	2-15/16	5-5/16			8.5
NC-140	5-3/4	3-3/8	5-7/8			11.6

Reversible for inside or outside corner



45° Elbow (Horizontal)

NM-60	2-9/16	2-9/16	2-11/16			3.4
NM-75	3-1/4	2-11/16	2-15/16			3.9
NM-100	4-3/16	2-15/16	3-5/16			5.3
NM-140	5-3/4	3-3/8	4-3/16			8.5

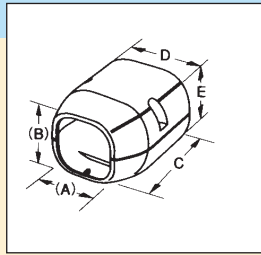


45° Elbow (Vertical)

NU-60	2-9/16	2-9/16	2-5/8			3.4
NU-75	3-1/4	2-11/16	2-13/16			4.2
NU-100	4-3/16	2-15/16	3-1/4			5.3
NU-140	5-3/4	3-3/8	3-11/16			8.3

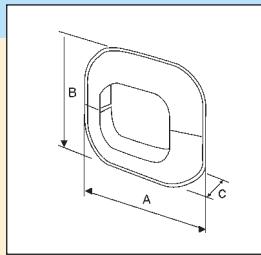
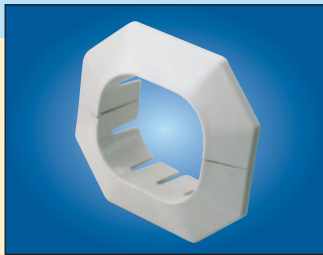
Reversible for inside or outside corner

Product	Dimensions (in inches)					Weight (ounces)
	A	B	C	D	E	



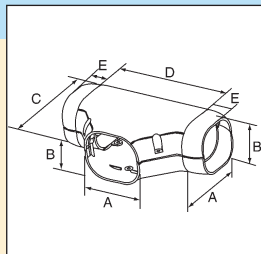
Variant Socket/Reducer (Used to change size of tube)

NJ-60/75	2 3/4	2-11/16	3-1/8	3-1/4	2-11/16	2.8
NJ-75/100	3 3/8	2-13/16	3-1/8	4-3/16	2-15/16	3.7
NJ-100/140	4-1/2	3-1/16	3-1/8	5-3/4	3-3/8	4.8



Wall Entry Fitting

NK-60	4-5/16	4-5/16	5/8			2.4
NK-75	4-15/16	4-1/2	5/8			2.7
NK-100	6-7/8	5-11/16	5/8			4.5
NK-140	8-11/16	7-1/16	5/8			6.7



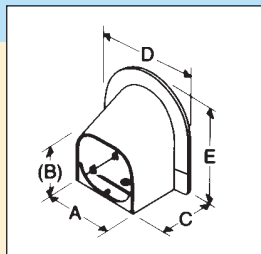
T-Joint

NT-75	3-1/4	2-11/16	4-3/4	6-5/16	1	8.0
NT-100	4-3/16	2-15/16	6-5/16	8-7/16	1-3/8	10.6
NT-140	5-3/4	3-3/8	7-7/8	10	1-3/8	16.4

NT-75 supplied with 2 Reducing Adaptors (75>60)

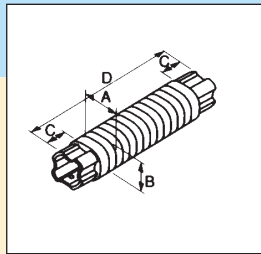
NT-100 supplied with 4 Reducing Adaptors: 2 - (100>60) & 2 - (100>75)

NT-140 supplied with 2 Reducing Adaptors (140>100)



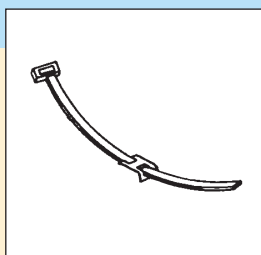
Corner Cap/Soffit Entry Fitting

NA-60	2-5/8	2-9/16	2-5/8	4-1/8	4-5/16	3.2
NA-75	3-5/16	2-3/4	2-5/8	4-7/8	4-15/16	3.5
NA-100	4-5/16	3	2-5/8	5-7/8	5-1/2	4.6
NA-140	5-13/16	3-3/8	2-5/8	7-7/16	6-1/8	5.5



Flexible Joint (Polypropylene material) available in nominal 2-foot and 3-foot lengths

NF-60	2-5/16	2-3/8	2-3/8	21-5/8		4.1
NF-60M	2-5/16	2-3/8	2-3/8	39-3/8		10.2
NF-75	3	2-1/2	2-3/8	21-5/8		4.8
NF-75M	3	2-1/2	2-3/8	39-3/8		12.3
NF-100	4	2-3/4	2-15/16	31-1/2		12.7
NF-140	5-1/2	3-1/8	3-1/8	39-3/8		20.8



Saddle Band

NV-S	11-13/16					0.0
NV-L	14-3/16					0.0

NV-L for 100 and 140; NV-S for 60 and 75

Base snaps into track in line tube to hold lineset in place.

LINE-HIDE™

Lineset Cover System

Put a professional finish on air conditioning installation with an easy-to-install modular system that beautifies exteriors and protects linesets, drainlines, and wiring.

- Available in four sizes — 2¼", 3", 4", and 6" tubes.
- Snap-on covers and a full selection of couplings, elbows, T-joints, caps, and more for any application, complex or simple.
- High-quality PVC with UV inhibitors for outdoor service in all weather conditions.
- Can be painted with most house paints to match exterior decors.
- Not just for HVAC. Hide any exterior cabling, piping, or wiring.
- Use it indoors, too! Meets UL94v-0 for interior applications.



Line-Hide Specifications:

Material	Weather resistant, UV stabilized, ASA/PVC/ABS/Poly/PE
Temperature Range	PVC: -4°F to 140°F ASA: -4°F to 194°F
Fire Rating	PVC/ABS meets UL94v-0, Poly/PE meets UL94HB
Weather Resistance	Pass 2,000 hour test to JIS D0 205 Standard
Standard Color	Ivory
Mounting	Molded in mounting screw locations
Assembly Screws	Stainless Steel

Limited Warranty

Mitsubishi Electric & Electronics USA, Inc. warrants to the original consumer purchaser of a Line-Hide product that it will replace any part which fails due to a manufacturing defect within one year from the date of original purchase. This warranty covers only replacement of the product itself with the owner paying all other costs, including labor, mileage, and transportation.

To make a warranty claim, contact your installer, or contact Mitsubishi Electric & Electronics USA, Inc., at **678/376-2900, fax 678/376-2890**. You must present proof of purchase to make a claim.

WHAT IS NOT COVERED:

Conditions and damages resulting from improper installation, delivery, or maintenance.
Misuse, abuse, accidents, or unreasonable use of product.
The cost of service to correct installation errors.
Consequential or incidental damages sustained by any person as a result of any breach of this warranty.

THIS WARRANTY IS NON-TRANSFERABLE AND IS THE ONLY WARRANTY PROVIDED. ALL OTHER WARRANTIES, INCLUDING THE IMPLIED WARRANTIES OF MERCHANTABILITY AND FITNESS FOR A PARTICULAR PURPOSE, ARE EXPRESSLY DISCLAIMED.

THIS WARRANTY GIVES YOU SPECIFIC LEGAL RIGHTS. HOWEVER, YOU MAY HAVE OTHER RIGHTS WHICH MAY VARY FROM STATE TO STATE. SOME STATES DO NOT ALLOW LIMITATION ON IMPLIED WARRANTIES OR EXCLUSION OF CONSEQUENTIAL DAMAGES; THEREFORE THESE RESTRICTIONS MAY NOT APPLY TO YOU.



HVAC Advanced Products Division

3400 Lawrenceville Suwanee Rd. • Suwanee, GA 30024

phone 678/376-2900 • fax 678/376-2890 • E-mail line-hide@hvac.mea.com • www.line-hide.com

© 2005 Mitsubishi Electric

LBRC11 06/05 10M